



**2009-2010 New Ulm Eagles
Girls' Hockey Season in Review**

As Gathered by New Ulm Sports Central



Articles published on websites of New Ulm Daily Journal or occasionally in other newspapers.

Articles published on websites of New Ulm Daily Journal or occasionally in other newspapers. For the benefit of all teams and athletes, the team's season summary and may be printed for personal use and not for commercial gain in order to abide for copyright restrictions. Coaches have been requested to provide game and season statistics since the history of this team will become a virtual scrapbook on the Internet as part of the researchable NUSC website.

NU/NUC/MVL Eagle Girls' Hockey 2009-10 Season Results

Date	G	Opponent	NU	OPP	W/L	Accum	Links/Remarks
11/11/09	1	Mankato West 2A	0	6	L	0-1	Stats
11/17/09	2	St. Paul United 4A	2	3	L	0-2	Stats
11/20/09	3	Mound-Westonka 5A	0	8	L	0-3	Stats
11/24/09	4	Marshall Tigers 3A	2	3	L	0-4	Stats
12/1/09	5	Albert Lea 1A	3	8	L	0-5	Stats
12/3/09	6	Orono 5A	0	1	L	0-6	Stats
12/5/09	7	Hutchinson 2A	5	6	L	0-7	Stats
12/7/09	8	Windom Area Eagles 3A	8	2	W	1-7	Stats
12/10/09	9	Waseca 1A	4	2	W	2-7	Stats
12/15/09	10	St. Peter/LeSueur-Hend/Mont-Lonsdale 2A	6	2	W	3-7	Stats
12/22/09	11	Luverne Cardinals 3A	3	4	L	3-8	Stats
12/28/09	12	Winona	5	2	W	4-8	Stats
12/29/09	13	Wisconsin Storm	1	4	L	4-9	Stats
12/30/09	14	St. Paul United 4A	1	7	L	4-10	Stats
1/5/10	15	Fairmont Cardinals 3A	6	0	W	5-10	Stats
1/12/10	16	Litchfield-Dassel-Cokato 2A	6	3	W	6-10	Stats
1/15/10	17	Marshall Tigers 3A	5	1	W	7-10	Stats
1/19/10	18	Fairmont Cardinals 3A	7	0	W	8-10	Stats
1/21/09	19	Luverne Cardinals 3A	6	3	W	9-10	Stats
1/26/09	20	Faribault Falcons 1A	2	9	L	9-11	Stats
1/28/09	21	Waseca High School 1A	9	2	W	10-11	Stats
2/1/10	22	St. Peter/LeSueur-Henders/Montg-Lonsdale 2A	0	4	L	10-12	Stats
2/4/10	23	Windom Area Eagles 3A	10	1	W	11-12	Stats
2/6/10	24	Dodge County Wildcats 1AA	3	4	L	11-13	Stats
2/12/10	25	Worthington/Fulda/Spirit Lake IA 3A	11	0	W	12-13	Stats
2/16/10	26	Marshall Tigers 3A	8	1	W	13-13	Stats
2/19/10	27	Luverne Cardinals 3A	5	1	W	14-13	Stats
2/24/10	28	Breck School 5A	0	10	L	14-14	Summary
2/25/10	29	Hutchinson 2A	2	8	L	14-15	Summary
		Season Totals				14-15	

Head Coach: Angela Zeig Assistant Coach: Nicole Williams

**Scrapbooking
New Ulm's
Sports History**

Use this material for your personal use, please support preservation of our sports history by becoming a sustaining member for only \$15.00. You may contribute any amount. Send to CRT, Inc., 1435 10t S St., New Ulm, MN 56073



New Ulm's season ends with loss to Hutch

By Jeremy Behnke — Journal Sports Editor

POSTED: February 26, 2010

MINNEAPOLIS - For the second straight day, New Ulm watched a team pile up the goals and shots on goal at the Class A Girls State Hockey Tournament.

The Eagles couldn't get the offense going and were eliminated from the state tournament in an 8-2 loss at Ridder Arena. New Ulm ends its season at 14-15.

Hutchinson outshot the Eagles 43-9 for the game.

"Hutch came out playing a lot stronger than the last time we had played them," New Ulm coach Angie Zeig said. "We played them earlier in the season and we lost 6-5, so we kind of knew what we were up against. In that game earlier in the season they had a couple of key injuries and some of those players you could tell were back today and really made an impact."

One player who made a big impact was Sara Carlson, who scored four goals and had two assists. Her teammate Claire Cripps added a hat trick of her own and had two assists.

"When Sara Carlson steps out on the ice, our players knew to look out for her, and in looking out for her sometimes we double and triple-teamed her and that left some of their other players open, which gave them more opportunities in the teamwork department," Zeig said.



Carlson scored Hutchinson's first goal when she deked Covington and back-handed a shot in for the 1-0 lead.

With 4:30 remaining in the first period, Hutchinson added to that lead when Carlson scored again and less than a minute later, the Tigers got a goal from Cripps that put her team up 3-0.

New Ulm, meanwhile was struggling with its passing.

"It didn't seem like our passes were going tape to tape like they should have been," Zeig said. "We had a couple of no-look passes where we just passed it to the other team."

The Eagles nearly got their first goal of the state tournament when Kaylen Berle fired a slapshot that was juggled by Hutchinson goalie Mary Cummins.

Carlson completed the hat trick as the Tigers added a goal at the 12:34 mark to go up 4-0. Cripps scored her second goal of the game on a power play at the 13:54 mark.

Then with 17 seconds left, Carlson got open on a breakaway and fired a shot past Covington to put the Tigers ahead 6-0. It was her fourth goal of the game.

The Tigers had 30 shots on goal after the first two periods.

Berle ended New Ulm's scoring drought when she hit the back of the net with 7:31 remaining in the game. Morgan Zollner was credited with the assist.

But Cripps scored her third goal of the game less than a minute later to put the Tigers up 7-1.

Fallon Macemon put the Tigers up 8-1 at the 11:36 mark and Madi Sellner scored New Ulm's second goal of the game unassisted at the 12:11 mark.



Staff photo by Steve Muscatello

New Ulm goalie Kacie Covington deflects the puck wide of the net during the second period of the Eagles' consolation game against Hutchinson Thursday at Ridder Arena in Minneapolis.



Eagles battered by Breck in state opener

Mustangs outshot New Ulm 51-11

See Game Summary from MSHSL at end of article

By Jeremy Behnke — Journal Sports Editor
POSTED: February 25, 2010

New Ulm's Jaya Dhami carries the puck past Breck's Caroline Griffith during the first period of the Eagles' opening-round loss in the Class A State Tournament Wednesday at the Xcel Energy Center in St. Paul.

ST. PAUL - Last year, the New Ulm girls hockey team made its debut at the Class A Girls State Hockey the quarterfinals.

The Eagles saw just how tough Blake was in the 9-0 loss.

On Wednesday, the Eagles made the return trip, but the result was the same as last year as Breck handed the Eagles a 10-0 loss in the quarterfinals of the Class A Girls State Hockey Tournament at Xcel Energy Center.

The Eagles have been outscored 19-0 in opening round games at the state tournament.

The loss drops the Eagles record to 14-14 on the season and sends them to the consolation bracket, where they will take on Hutchinson at 10 a.m. today at Ridder Arena. Hutchinson lost to South St. Paul 6-0 in the other quarterfinal.

The Mustangs dominated the shots on goal, firing 21 shots in the first period and finishing with 51 for the game. Breck outshot New Ulm 51-11 and it was the team's goal to just focus on attacking.

"Our whole approach all year is how we need to skate and how we attack the neutral zone," Breck coach Lenny Vanelli said.

It didn't take the Mustangs long to get on the board. Carly Schaefer tapped in a one-timer in front of the net past New Ulm goalie Shalyn Salonek to put the Mustangs up 1-0 just 1:31 into the game.

That was the only goal for the Mustangs in the first period as Salonek did a good job of reacting to what the Mustangs dealt her in the first period.

"Our mentality was that's how we started off last year against Blake in the state tournament," New Ulm coach Angie Zeig said of the 1-0 deficit. "Our goaltender Shalyn was doing a phenomenal job in the nets and she had some key saves. So we knew that we could do this against them if we play three periods like this against them."

After that, things were different for the Eagles.

Once again in the second period, the Mustangs scored quickly, this time on a goal by Mork at the 1:40 mark on an assist from Schaefer. After that, it became a one-sided contest.

The Mustangs added to that lead on a power play goal by Milica McMillen at the 2:52 mark and suddenly they were up 3-0.

Breck took a 4-0 lead on Mork's goal at the 6:04 mark, and 11 seconds later the Mustangs were up 5-0 after Caroline Griffith scored on an assist from Mikki Johnson.

Karina Marette's goal gave the Mustangs a 6-0 lead and Mork scored her third goal of the game at the 10:11 mark in the second period on an assist from Caitlin Reilly and Schaefer.

It was a period that didn't seem to ever end for the Eagles.

Kacie Covington came in to relieve Salonek of her duties in the third period, but the damage was way past done. Breck fired 38 shots on goal at Salonek in the first two periods.

Covington was the winning goalie in the Section 3A championship game against Luverne, but Zeig elected to go with Salonek this time around.

"Shalyn tends to be a better goalie when it comes to those high stress levels, where there tends to be a lot of shots early and just a lot of shots all around," Zeig said. "She tends to have the quicker glove and Kacie is a very good goaltender at angles and we just saw against a team like this that reaction time was a factor."

Breck continued the assault in the third period when Emily Kleidon scored at the 5:51 mark to put her team ahead 8-0.

Kleidon added to that total with her second goal, this one coming on a power play at the 14:06 mark, and Breck scored again with one minute left for the final 10-0 margin.

1st period

Breck: Schaefer (Mork, Reilly), 1:31.

2nd period

Breck: Mork (Schaefer), 1:40;

Breck: McMillen PP (Schipper, Marette) 2:58;

Breck: Mork (Schipper, Marette) 6:04;

Breck: Griffith (Johnson) (6:15).

Breck: Marette PP (Kleidon, Brodersen) 9:00;

Breck: Mork (Reilly, Schaefer) 10:11.

Third period

Breck: Kleidon (Johnson, Griffith) 5:51.

Breck: Kleidon PP (Bredersen) 14:06.

Breck: Griffith (Orlady, Grace) 16:00

Game summary reprinted from Minnesota State High School League website.

State Tournament Box Score By Howard Voigt New Ulm Eagles vs Breck School (Feb 24, 2010)

Hockey Game Box Score

Hockey Game Box Score (Final)

2010 State Girls' Hockey Tournament

New Ulm Eagles vs Breck School (Feb 24, 2010 at St. Paul MN)

New Ulm Eagles (14-14-0) vs. Breck School (24-3-1)

Date: Feb 24, 2010 Location: St. Paul MN

Arena: Xcel Energy

Center

Attendance: Start time:11:00 am End time:12:46

Total time:1:46

#	Prd	Time	Team	Typ	Scored	By	Assists	Visitor
On Ice	Home	On Ice						

1	1st	01:31	BREC	EV	Schaeder, Carly	Mork, Kayla		
7,10,8,18,6					21,2,4,15,16			
2	2nd	01:40	BREC	EV	Mork, Kayla	Reilly, Caitlin		
18,13,6,10,7					4,16,2,21,15	Schaeder, Carly		

3	2nd	02:58	BREC PP	McMillen, Milica	Schipper, Katie	
15,14,11,3,9				34,6,19,26,8		
4	2nd	06:04	BREC EV	Mork, Kayla	Marette, Karina	
8,7,10,18,6				4,6,19,2,21	Schipper, Katie	
5	2nd	06:15	BREC EV	Griffith, Caroline	Marette, Karina	
7,9,13,14,3				17,7,34,26,21	Johnson, Mikki	
6	2nd	09:00	BREC PP	Marette, Karina	Kleidon, Emily	
18,14,9,3,11				19,8,26,34,6		
7	2nd	10:11	BREC EV	Mork, Kayla	Brodersen, Chris	
18,13,10,6,9				4,15,16,2,21	Reilly, Caitlin	
8	3rd	05:51	BREC EV	Kleidon, Emily	Schaeder, Carly	
7,6,18,3,14				8,7,17,26,34	Johnson, Mikki	
9	3rd	14:06	BREC PP	Kleidon, Emily	Griffith, Caroli	
8,26,34,6,19					Brodersen, Chris	19,9,13,3
10	3rd	16:00	BREC EV	Griffith, Caroline	Orlady, Grace	
7,8,10,3,6				17,34,7,37,26		

TEAM SUMMARY

##	New Ulm Eagles	-Shots by Prd-				Tot	+/-
		1	2	3			
3	*Griebel, Morgan.....	0	0	0	0	-3	
4	Sandberg, Miranda....	0	0	0	0	0	
6	McMullen, Miranda....	0	0	0	0	-6	
7	Weiss, Lexie.....	0	0	0	0	-6	
8	Sellner, Madi.....	0	0	0	0	-3	
9	*Denn, Kali.....	1	0	0	1	-2	
10	Zollner, Morgan.....	1	0	0	1	-5	
11	Dhami, Jaya.....	0	0	1	1	0	
13	*Huffman, CeCe.....	0	0	0	0	-3	
14	*Berle, Kaylen.....	0	2	2	4	-2	
15	*Salonek, Chelsie....	1	0	2	3	0	
16	Abrahamson, Aimee....	0	0	1	1	0	
18	Fischer, Lexi.....	0	0	0	0	-5	
TM	TEAM.....	0	0	0	0	0	
	Totals.....	3	2	6	11	-35	

##	Breck School	-Shots by Prd-				Tot	+/-
		1	2	3			
2	Opperman, Hayley.....	1	1	2	4	+4	
4	Mork, Kayla.....	2	4	0	6	+4	
6	*Schipper, Katie.....	3	3	2	8	+1	
7	Johnson, Mikki.....	0	0	0	0	+3	
8	*Kleidon, Emily.....	1	3	4	8	+1	
15	Reilly, Caitlin.....	1	0	0	1	+3	
16	Schaeder, Carly.....	3	0	1	4	+3	
17	Griffith, Caroline..	1	1	1	3	+3	
19	*Marette, Karina.....	1	1	0	2	+1	
21	Husband, Jillian....	1	0	0	1	+5	
26	*Brodersen, Christine	1	2	2	5	+3	
34	*McMillen, Milica....	6	2	1	9	+3	
37	Orlady, Grace.....	0	0	0	0	+1	
TM	TEAM.....	0	0	0	0	0	
	Totals.....	21	17	13	51	+35	

Goals by Period

Team	1	2	3	Tot
NEWU	0	0	0	- 0
BREC	1	6	3	- 10

Shots by Period				
Team	1	2	3	Tot
NEWU	3	2	6	- 11
BREC	21	17	13	- 51

Power Play Goals-Attempts (Shots)

Prd	NEWULM	BRECK
1st	0-0 (0)	0-0 (3)
2nd	0-2 (1)	2-3 (6)
3rd	0-2 (2)	1-1 (2)
Total	0-4 (3)	3-4 (11)

Penalties/Minutes by Prd

Prd	NEWULM	BRECK
1st	1/2	0/0
2nd	2/4	3/6
3rd	1/2	1/2
Total	4/8	4/8

Three stars:

1. Mork, Kayla
2. Payne, Ahsha
3. Kleidon, Emily

Officials:

Referee: Mark Cooper
 Referee: Ron Laituri
 Linesman: Garrett Bitzer
 Linesman: Danielle Newland
 Scorer: Melissa Wolf

GOALTENDERS

New Ulm Eagles	Dec	MIN	GA	EN	1	2	3	Svs
33 Salonek, Shalyn.....	L	34:00	7	0	20	11	0	31
1 Covington, Kacie.....		17:00	3	0	0	0	10	10

Breck School	Dec	MIN	GA	EN	1	2	3	Svs
30 Payne, Ahsha.....	W	51:00	0	0	3	2	6	11

PENALTY SUMMARY

Prd	Player	Team	Min	Offense	Time
1st	Weiss, Lexie	NEWU	2	TRIPPING	16:03 PP
2nd	Denn, Kali	NEWU	2	TRIPPING	02:08 PP
2nd	Mork, Kayla	BREC	2	CHECKING	03:53 PP
2nd	Fischer, Lexi	NEWU	2	TRIPPING	08:13 PP
2nd	Marette, Karina	BREC	2	CHECKING	12:01 PP
2nd	Mork, Kayla	BREC	2	TRIPPING	16:40 PP
3rd	Griffith, Caroline	BREC	2	CHECKING	09:23 PP
3rd	Griebel, Morgan	NEWU	2	CROSS-CHECKING	13:42 PP

Win-Payne, Ahsha (11-2-0). Loss-Salonek, Shalyn (6-6-0).

New Ulm Eagles - Faceoffs

##	Player	W	L
14	Berle, Kaylen	10	20
8	Sellner, Madi	8	15
18	Fischer, Lexi	1	0
10	Zollner, Morgan	1	0
9	Denn, Kali	1	3
4	Sandberg, Miranda	0	1
	Totals.....	21	39

Breck School - Faceoffs

##	Player	W	L
19	Marette, Karina	16	7
7	Johnson, Mikki	12	4
16	Schaeder, Carly	9	7
15	Reilly, Caitlin	1	0
8	Kleidon, Emily	1	2
6	Schipper, Katie	0	1
	Totals.....	39	21

New Ulm Eagles - Power Play Summary

Prd	Start	End	Elapse	Shots	(Opp)
2nd	03:53	05:53	02:00	0	1
2nd	12:01	14:01	02:00	1	3
2nd	16:40	00:00	00:20	0	0
3rd	00:00	01:40	01:40	2	0
3rd	09:23	11:23	02:00	0	1
SUMMARY: 4 opps, 3 shots, 0 goals, time 08:00					

Breck School - Power Play Summary

Prd	Start	End	Elapse	Shots	(Opp)
1st	16:03	00:00	00:57	3	0
2nd	00:00	01:03	01:03	2	0
2nd	02:08	02:58	00:50	1	0 PPG
2nd	08:13	09:00	00:47	3	0 PPG
3rd	13:42	14:06	00:24	2	0 PPG
SUMMARY: 4 opps, 11 shots, 3 goals, time 04:01					

Penalty shots - None.

Ready for Round Two (28)

By Jim Bastian

POSTED: February 24, 2010

NEW ULM - It will be out of the frying pan and into the fire for the New Ulm girl's hockey team as the Eagles enter their second straight Minnesota State Girl's High School Hockey Tournament.

Breck enters the tournament with an impressive 23-3-1 mark and is seeded No. 2 in the tournament.

"That is going to be a very tough game," said senior Kaylen Berle, who leads the Eagles with 39 goals and 24 assists. "They are the number two seed [behind Warroad] in the tournament. We know that Breck is tough and it might be a lot like our first [state tournament] game last year when we played Blake."

Breck has four girls who have scored double-digit goals this season, led by Kayla Mork who has 22 goals and 17 assists. Sophomore Milica McMillen has scored 16 goals and added 35 assists. She was also recently named to the Minneapolis Star Tribune First Team All-State Team. She was also on the USA Hockey Program 2009 USA 18-and-under Fall Festival Team which played three games in Calgary this past year.

Hayley Opperman has committed to Amherst while Emily Kleidon is being recruited by several east coast colleges for hockey.

All in all, New Ulm coach Angie Zeig, who brings her team into the tournament with a 14-13-1 record, knows that her team has their work cut out for them.

"The girls know what kind of a match-up they are up against," Zeig said. "They need to be in that mindset that Breck is not a team they we are going to beat every time that we play them but there is that one chance in ten - kind of like "Miracle On Ice" - it can happen."

Zeig said that she stressed to the team that they are one of only eight teams to make it to the state tournament.

"We knew that we would not get a seeding [the top four teams in the state tournament are seeded] especially this year with our record," she said. "But we just need to go up there and show everyone that we deserve to be here and that we also have a quality hockey program."

New Ulm's 14-13-1 record is better than three other teams in the state tournament in Hutchinson (12-15-0), Chisago Lakes (12-13-3) and Alexandria (13-12-2).

"We are only one of three teams returning to the state tournament from last year," added Zeig. "We did win a game in the state last year (over Eveleth-Gilbert) and moving on to play on Saturday helped to get our name out to coaches. They see that New Ulm is producing quality players like Korinne O'Connor who is playing hockey now at St. Thomas. The younger hockey players in New Ulm know us and what we have done the last two years.

"And I think that experience will help us. They know what the nervousness will be like - they know what a team like Breck will throw at us. Players can get caught up when they are on the ice - the same ice that the Minnesota Wild plays on - and the bigger crowds at the state tournament. Last year we walked by the Wild locker room and they wanted to take pictures of it. But now, we are here to play hockey."

Berle put it another way.

"We are going to have to go out there and play with our hearts," she said. "We need to play hard."



Staff photo by Steve Muscatello

New Ulm Senior Kayla Berle leads the Eagles with 39 goals and 24 assists this season. Today the Eagles play Breck in the quarterfinals of the Class A Girls State Hockey Tournament.

Back-to-Back (27)

Eagles earn return trip to state hockey

By Jeremy Behnke — Journal Sports Editor

POSTED: February 20, 2010

REDWOOD FALLS - Prior to Friday's Section 3A championship game, the New Ulm goaltending duo of Kacie Covington and Shalyn Salonek hadn't been tested much, seeing only about 20 shots in the first two games combined and allowing just one goal in that stretch, and that one came off of a New Ulm players' stick.

But against Luverne for the right to go to state, Covington was prepared for much more action and she saw that right away as the Cardinals took the first few shots on goal.

But soon after, New Ulm found itself up 1-0 and Covington was able to relax.

She was tested often, but she came up with big save after big save as the Eagles advanced to the state tournament for the second straight year, defeating the Cardinals 5-1 at Redwood Falls Community Center.

The Eagles will find out who they play Sunday after all eight teams are determined for the state tournament.

Covington had one of her better games of the season and it came at the right time. She pounced on many loose pucks in front of the net and kept the Cardinals off the board.

"I knew they were going to come out flying so I knew I had to be ready and keep an eye on the puck and cover what comes to me," Covington said.

Kaylen Berle scored the first two goals for the Eagles. The first one came when she picked up a loose puck on a bad pass by the Cardinals.

She got ahead of the Luverne defender and was alone on the breakaway, putting it past Autumn Wenzel for the 1-0 lead.

"It was a wide open puck and somebody missed the pass and took the puck at the blue line and I skated in and deked out the goalie and shot it in," Berle said.

Berle said that goal was big because the Eagles were the ones that looked to be nervous early on.

"I think we came out and we were so nervous and we couldn't focus right away," Berle said. "We came out and a couple shifts later we finally put them in the net and we were talking."

Berle's first goal came with 14:51 left in the first period. Less than two minutes later, a Berle wrister found its way past Wenzel for the 2-0 lead. Jaya Dhama got credit for the assist on the play.

New Ulm added a power play goal off the stick of Madi Sellner. The assist went to Lexie Weiss and Chelsie Salonek, and the Eagles had a 3-0 lead after the first period.

The second period was scoreless until Luverne's Lauren Christensen scored on a rebound with 53 seconds left in the period to make it 3-1.

The Eagles lead had shrunk but their game plan was still the same after the second period.



Staff photo by Steve Muscatello

Members of the New Ulm girls hockey team celebrate their Section 3A championship win against Luverne Friday in Redwood Falls. For more photos of this event, go to <http://cu.nujournal.com>

"It was still a 0-0 game, we still had to come out like we did at the beginning of the game," Berle said. "We had to keep our heads up and we had to realize that we can't get ahead of ourselves. We're winning this game, we still have to be playing our hardest."

New Ulm got a goal from Kali Denn on an assist from Berle to up the lead to 4-1 early in the third period. Later in the period, they put the game out of reach on a goal from Morgan Zollner.

Covington finished the game with 22 saves. Throughout the Section 3A tournament, the New Ulm defense has been coming up with plenty of big plays. Friday night was no different.

"It helped me a lot," Covington said of the defense. "Some of them I can't see and they're there to block them and back me up. I couldn't do it without them."

The Eagles were in celebration mode after the final horn sounded. They improved to 15-13 on the year and get to return to the Xcel Energy Center Wednesday for a Class A quarterfinal game.

"It's great, especially my senior year, it's a great way to finish this year," Covington said.

Berle agreed. After a slow start, the Eagles are back to where they wanted to be.

"It feels good," Berle said. "We came out this year not doing so well but then we picked it up and we worked well and got our championship."

Eagle girls hoping to return to state

February 18, 2010

By Jim Bastian
New Ulm Journal Sports Writer

NEW ULM - The New Ulm High School girl's hockey team hopes to earn their second straight trip to the Minnesota State High School Hockey Tournament on Friday when they take on Luverne in the Section 3A finals in Redwood Falls.

The Eagles and Luverne split their two meetings this season with Luverne winning the first game 4-3 and New Ulm getting payback at home with a 6-3 victory.

New Ulm head coach Angie Zeig said that the bulk of the Luverne offense comes from its top line.

"When their first line is not on the ice, they do not produce as well," Zeig said. "Their goalie had a tough night in their last game and if we can run into that same kind of situation, that may be an advantage for us."

Zeig said that the difference between the first and second encounters was that the first game was during Christmas break.

"We went down there prior to the break and our focus was not there," she said. "We had a two-hour bus ride and the girls did not have to think about homework and not thinking about the game. They were just relaxed. But when they came here, it was a big change because we were in an upswing with our season. We were playing well and had started to win some games.

"Also, the 6-3 win was the game where Kaylen Berle got ejected so that made the game seem closer than I think that the game really was. But we know that we can have a hot or cold day so we are hoping that we can have another hot day."

And Zeig feels that her team is playing well coming off an 8-1 win over Marshall in the playoffs.

"I was impressed by how well everyone on the team played [against Marshall]. We forechecked well, we backchecked well - we played as a team. We did not have a lot of goals that were singlehandedly pulled off against Marshall. They were all teamwork goals."

She also feels that the experience that her team gained last year in the state tournament will be a big help Friday.

"We know what we have to do," she said. "Last year we went in with a lot of confidence - we had a good group of seniors last year on the ice and I again see a good group of seniors that have really stepped up toward the end of the regular season. They have pushed the team because they know how much it means to them to get back to the state tournament. You do not get this chance every year. We are fortunate to be here again."

She hopes that her team's performance Friday will be a repeat of what they did against Marshall.

"Our goal is to play more of a defensive game - we want to prevent them from getting any shots on us, because we know that our goals will come. We have a lot of quality scorers on our team. Every single player on our team has at least one point on the season. We need to make sure that we do not give them an quality opportunities."

Zeig said that she does not know who she will start in goal.

Eagles advance to championship game (26)

By Jeremy Behnke, Journal Sports Editor

POSTED: February 17, 2010

NEW ULM - Going into Tuesday's Section 3A playoff game against Marshall, the New Ulm girls hockey team definitely knew what the Tigers were going to try to do.

So the Eagles came out and displayed some stingy defense and limited the Tigers to only eight shots on goal. That helped the Eagles return to the Section 3A championship game with a 8-1 win at the New Ulm Civic Center Tuesday.

New Ulm (13-13) will face No. 1 seed Luverne at 7 p.m. Friday in Redwood Falls for the right to go to the state tournament.

"I think our team as a whole played a very good defensive game," New Ulm coach Angie Zeig said. "We really limited them to the amount of shots that they were able to take."

New Ulm's Kaylen Berle led the way with three goals for New Ulm. That gives her seven in postseason play after she scored four in the opening round win over Worthington last Friday.

New Ulm got on the board early in the first period after Jaya Dhami opened the scoring on an assist from Berle with 13:47 left in the first period.

New Ulm, which only allowed eight shots on goal for the entire game, dominated the first period and didn't allow Marshall any key scoring opportunities.

Berle put the Eagles up 2-0 on Kali Denn's assist and Berle was credited with New Ulm's third goal after she deflected a slap shot by Denn past Marshall starting goaltender Paige Moravetz.

Zeig said that the Eagles played a good game on defense throughout and that it will be a boost for their confidence going into Friday's game with Luverne.

"That was kind of our game plan coming in," Zeig said. "We know we've got the ability to score, but it's the ability to prevent the other team from scoring that we haven't been as strong on. So coming out and playing a hugely defensive game going into the section championship was big."

Berle completed her hat trick in the third period on an assist from Denn and Morgan Zollner to make it 4-0 and Zollner added another goal to make it 5-0.



Staff photo by Steve Muscatello
New Ulm's Morgan Zollner (right) and Marshall goalie Paige Moravetz fight for a rebound during the Eagles' Section 3A Playoff win Tuesday at the New Ulm Civic Center. For more photos of this event, go to <http://cu.nujournal.com>

Marshall caught a break in the second period after a loose puck went off the stick of an Eagles player and past New Ulm goalie Kacie Covington. Marshall's Bridgette Louwagie was credited with the goal, but the celebration was short-lived as New Ulm took a 6-1 lead into the second intermission on a goal by Aimee Abrahamson.

Lexi Weiss and Miranda Sandberg scored the final two goals for New Ulm.

New Ulm ends Marshall's season, 8-1 (26a)

POSTED: February 17, 2010

Marshall Independent

Note: See hockey box score at end of article

Before Tuesday's playoff matchup against New Ulm, Marshall girls hockey coach Kevin Schroeder and his team reflected on how far they'd come.

On a team with seventh-and eighth-graders and only three seniors, the team knew it would be a learning experience throughout the season.

Marshall's 8-1 loss to New Ulm ended this season, but the Tigers are optimistic about their young program.

"We exceeded expectations this season," Schroeder said. "We were young and had a lot of inexperience, but the girls have grown through the year. I'm proud of our girls."

The team knew it have a tough task ahead of it against top-seeded New Ulm.

"We would have had to play a perfect game to win," Schroeder said. "We couldn't get a whole lot of offense generated."

Afterwards, the seniors were optimistic about where the girls team is headed in the future.

"We knew this season wasn't going to be easy," said senior Jenny Schwieger. "Looking back, we made a lot of progress and really came together."

New Ulm jumped out to an early 3-0 lead after the first period.

Kaylen Berle picked up a hat trick for the Eagles and also had two assists. Kali Denn had three assists in the game.

Bridgette Louwagie got the lone goal for the Tigers, an unassisted goal at four minutes, 25 seconds.

Paige Moravetz and Mary Beth Brungardt split time at goalie for Marshall, with Moravetz finishing with 12 saves and Brungardt with nine.

With her season over, Schwieger looks forward to what the young Tigers roster is capable of next season. "It's a good program," she said. "The girls will learn and things are going well for them."

New Ulm ... 3 3 2 - 8

Marshall0 1 0 - 1

First Period

NU-Jaya Dhami (Kaylen Berle) 3:15 (1)

NU-Berle (Kali Denn) 11:39 (2)

NU-Berle (Lexi Fischer, Denn) 13:21 (3)

Second Period

NU-Berle (Denn, Morgan Zollner) 2:32 (4)

NU-Zollner (Madi Sellner) 4:15 (5)

M-Bridgette Louwagie (unassisted) 4:25 (1)

NU-Aimee Abrahamson (Berle, Miranda McMullen) 9:48 (6)

Third Period

NU-Lexie Weiss (Zollner) 4:51 (7)
NU-Miranda Sandberg (Dhami, Ashley Sandberg) 5:45 (8)
Saves-M: Paige Moravetz 12, Mary Beth Brungardt 9
Shots on goal-NU: 34, M: 9.

Eagles crush Worthington (25)

By Jeremy Behnke, Journal Sports Editor
POSTED: February 13, 2010

NEW ULM - With her high school career winding down, New Ulm senior Kaylen Berle wasn't quite ready to hang up her skates just yet in Friday's Section 3A playoff game against Worthington.

So Berle took matters in her own hands, scoring three goals in the first period as the Eagles won convincingly 11-0 in the Section 3A playoffs.

The loss ended Worthington's season at 0-17 and New Ulm improved to 12-13.

The Eagles will host Marshall at 7 p.m. Tuesday in the semifinals at the New Ulm Civic Center.

Berle finished the game with four goals. Three of them came in that first period where the Eagles took a 5-0 lead and didn't look back. She added a fourth goal in the third period during running time.

"I just figured that this was my last year and this could be our last game, so I knew I wanted to go out there and play my hardest," Berle said. "The whole team knew that this could be our last game so we all went out and played hard and we knew we could do it."

Shalyn Salonek was the winning goalie for the Eagles, earning the shutout.

Berle scored the first two goals of the game, the first off an assist from Kali Denn and the second was unassisted.

Jaya Dhami, Berle and Madi Sellner added goals to make it 5-0 after the first 17 minutes of the game.

Chelsey Salonek assisted on Dhami's goal and Berle's third goal and Berle added an assist on Sellner's goal.

In the second period, the Eagles went up 6-0 on Salonek's goal. The goal was assisted by Jenny Gag. Later, Morgan Griebel scored unassisted to make it 7-0 and Lexie Weiss scored on Salonek's third assist of the game to put the Eagles up 8-0 at the 12:30 mark in the second period.

Berle said that the Eagles were careful not to look ahead but they did know that they needed to work on a few things against the Trojans.

"We needed to work on our passing and we did a lot of good talking," she said. "We had our heads up and we just had to hit the net and we had a lot of shots that were on net."

In the third period, New Ulm scored three more times. Ashley Sandberg scored the ninth goal of the game on an assist from Miranda McMullen. Weiss added her second goal of the game at the 11:50 mark and Berle scored her fourth goal of the game at the 16:50 mark.



Staff photo by Steve Muscatello
New Ulm's Morgan Zollner (10) battles Worthington's Angela Bui for the puck during the first period of the Eagles' playoff win Friday at the New Ulm Civic Center. For more photos of this event, go to <http://cu.nujournal.com>

Girls Hockey | Dodge County 4, New Ulm 3 (24a)

POSTED BY ROCHESTER POST BULLETIN 2/6/2010 11:30:22 PM

Dodge County 4, New Ulm 3

Dodge County:Dana Rasmussen 2 goals; Alaina Pappas 1 goal, 1 assist; Madison Tibben 1 goal; Kortney Kleber 1 assist; Emily Gunderson 1 assist; Darby Dodds 2 assists; Rose Johnson 1 assist; Anna Hunter 28 saves.

Notes:Dodge County had 33 shots on goal. ... The Wildcats finish the regular season 15-10-0 and will begin section tournament play this week.

Eagle girls fall to Dodge County (24)

POSTED: February 7, 2010 NEW ULM JOURNAL

DODGE CENTER - Dodge County defeated New Ulm 4-3 in girls hockey action Saturday.

Kaylen Berle had two goals and Jaya Dhami had one and Lexi Fischer had two assists.

Kacie Covington had 27 saves for New Ulm (10-13), who hosts Rocori at 7 p.m. Monday.

Eagle girls power past Windom (23)

By Jim Bastian, Journal Sports Writer

POSTED: February 5, 2010

NEW ULM - Earlier in the season, the New Ulm Eagle girl's hockey team recorded 99 shots on goal in its first meeting with Windom, a game New Ulm won 8-2.

Thursday night, the Eagles did not reach that 99-shot mark but still managed to fire 51 shots on two Windom goalies as they evened their season record at 12-12 with a 10-1 win over Windom at the New Ulm Civic Center.

New Ulm outshot Windom 51-10 in the game.

Kaylen Berle recorded a hat trick for New Ulm with Kali Denn adding two goals. Lexie Weiss, Madi Sellner, Jaya Dhami, Chelsie Salonek and Aimee Abrahamson scored the other goals for New Ulm.



Kylie Willard scored the lone goal for Windom (6-16-1).

For New Ulm coach Angie Zeig, the game was one where she got to give quality playing time to all 16 skaters and two goalies.

"It was nice to give players time on the ice especially the third line," she said. "They got some really nice playing time and some good scoring chances. We had a lot of teamwork."

That teamwork turned into a 27-4 first period shots on goal advantage for New Ulm, a 4-0 first period lead and a pre-determined change of goalies from Windom.

Windom's goalie, Brooklyn Drahota, was 19 saves away from 5,000 for her career. And after New Ulm got goals from Denn and Dhami, Windom coach Shawn Vrenker pulled Drahota in order to let her to set the save record at home, replacement Bailee Sauter, a seventh-grader, took the brunt of the New Ulm offense allowing the final eight goals.

Staff photo by Steve Muscatello

New Ulm's Jaya Dhami launches a shot on net after getting past Windom defender Shelby Veenker (22) during the second period of the Eagles' win Thursday at the New Ulm Civic Center. For more photos of this event, go to <http://cu.nujournal.com>

Goals from Abrahamson and Berle on a shot that bounced off Sauter's right leg and into the net gave New Ulm a comfortable lead.

Kacie Covington started for New Ulm and was pulled in favor of Shalyn Salonek after the first period.

In period two, New Ulm added three more goals against Sauter with Denn recorded her second goal of the game. Berle also got her second goal with Sellner making it a 7-0 score after two periods.

Zeig said that having a lead like that makes it tough to keep the players from falling into bad habits.

"We saw that at the end of the second period when we allowed them to come down on a 3-on-1 break [for their only shot on goal in that period]. We had a talk with the defensemen about that."

But she also saw some good things that her team did wiith that big lead in hand,.

"Our defense and forwards switched with [Kaylen] Berle coming out and passing the puck to CeCe [Huffman]. CeCe got down and came across and had a nice shot on net. it is good to see them talking and switching like that."

Goals from Salonek, Berle (for her hat trick) and Weiss gave New Ulm a 10-0 lead midway through the final period. The 10th goal scored had Zeig looking at one of her rules as a coach.

"I will never beat a team by more than 10 goals," she said. "And I stick to that."

New Ulm was seeded No. 2 in Section 3A behind Luverne and will open playoffs on Friday, February 12th at home against Worthington. A win there means they will host the winner of the Redwood Valley/Marshall game on February 16th.

Eagle girls suffer rare SCC hockey loss (22)

By Jim Bastian, Journal Sports Writer

POSTED: February 4, 2010

(Ed. Note: The New Ulm loss to St. Peter was not previously reported by New Ulm Journal nor were the score and details provided to NUSC)

NEW ULM - It has been a long time since the New Ulm Eagle girl's hockey team lost a South Central Conference game.

But that happened Monday when the Eagles were shocked by LeSueur-Henderson/St. Peter/Montgomery-Lonsdale 4-0. It is the first time in history that an Eagle girl's hockey team has been shut out in an SCC contest.

"The first year that we had a conference we tied with Fairmont," New Ulm coach Angie Zeig said. "And in 2001, we did not win the conference title. I could not tell you if that loss was our first in the SCC since 2001."

And it was a case of the old hockey adage coming into play - a hot goalie wins games.

"We played very well, " said Zeig. "Their goalie [Kirsten Shaughnessy] had a 33-save shutout - we just could not get the puck by her. We pounded her with a bunch of shots but we could not get that first shot to get by her to kind of break open the floodgates."

New Ulm had beaten LHSP 6-2 earlier in the season.

"St. Peter has really been becoming a quality team these past few years," Zeig said. "They were pretty tough last year. The first game of the season we were able to get in their goalie's head early [in that 6-2 win] which helped us get the lead."

The loss by the Eagles to LHSP may also cost New Ulm an outright SCC crown.

"We will probably tie for the conference [with LHSP]," Zeig said. "They have not played Fairmont [who is winless in the SCC] yet - they have both games left with them."

Zeig said that it will not be hard to regroup the team for tonight's non-conference game with Windom at the New Ulm Civic Center.

"We will talk at practice about how to improve the caliber of our shots - where we need to focus on shooting. We were not doing things wrong in the game - we ran into a goalie that was hot. Some of our shots were missing the net by inches. We had talked this game up a lot and it was one where we wanted to do well in. We did well but we could not finish it."

Zeig said that her team needs to play well again tonight against Windom to prepare for tougher games Saturday at Dodge County and Monday hosting Rocori in a make-up game.



Staff photo by Mary Roufs

New Ulm's Kaylen Berle (14) attempts to break up a play by Waseca's Alicia Knoll (24) during the game on Thursday night at the New Ulm Civic Center. For more photos of this event, go to <http://cu.nujournal.com>

New Ulm ices Waseca (21)

By Dustin Briggs — Journal Sports Writer

POSTED: January 29, 2010

NEW ULM - The New Ulm Eagles girls hockey team was looking to stay undefeated in the South Central Conference taking on the Waseca Bluejays Thursday night.

Both teams began the game with intensity. Despite the defenses' impressive efforts, the Eagles had the lead at the end of the first period 3-2 with two teams looking determined to come out with a win.

But in the second period, everything changed for the Bluejays when Alicia Knoll, who scored the game's first goal with 13:38 in the first period during a Waseca power play, slammed her lower leg into the boards in a defensive effort with 9:22 left in the second period.

After the paramedics carried her off the ice on a stretcher into the back of an ambulance, the Bluejays fell apart, unable to score another goal the rest of the game.

"It's tough for any team to play after they lose any player. Especially with a possible season ending injury. We've been there and we know how tough it can be," New Ulm coach Angie Zeig said.

Although the Bluejays goalie Laura Weichert had 16 saves, the Eagles won the game 9-2 scoring seven unanswered goals after Knoll left the game.

Kaylen Berle scored the Eagles' first goal assisted by Kali Denn with 10:38 in the first period and 14 seconds later Chelsie Salonek scored the second goal assisted by Berle and Denn.

With the Eagles up 5-2 at the beginning of the third period, New Ulm scored three goals in the first two minutes of the period.

Morgan Zollner scored the first of the three goals with an assist from Aimee Abrahamson with 16:36 left in the third period.

Then with 15:33 left, Lexi Fischer scored with an assist by Berle, and in 19 seconds of play, Zollner came back for seconds assisted by Miranda Sandberg.

A frustrated Waseca team displayed its feelings through penalties.

With 7:45 left in the second period, Brittany Volkmer received 10 minutes in the penalty box for misconduct when she threw a check from behind with teammate Sierra Copp who received two minutes.

With 3:28, Dana Sopkowiak got two minutes for an aggressive holding penalty in a struggle for possession of the puck in front of the Waseca goal.

The Eagles who improve to 10-10 overall and 5-0 in conference play had a very impressive offensive night with Berle scoring four goals and two assists, Zollner adding two goals, Salonek, Abrahamson, and Fischer each with a goal and an assist, and Denn with three assists.

"I'm really happy with how we are playing," Berle said. "The beginning of the season wasn't looking good but we lifted our heads up and realized we can take the conference and have a chance at state."

"We are hoping to get first seed with a first round bye," Zeig said. "We don't want to get overconfident. We are definitely going to have to work for a championship."

Falcons fight off Eagles 20A

By Jim Bastian — Journal Sports Writer
POSTED: January 27, 2010

NEW ULM - When a player records a hat trick in a hockey game, it is an accomplishment.

When two players from the same team get hat tricks, it is an achievement.

Megan Bergland and Jackie Johnson each scored three goals as Faribault flexed its Big Nine muscles with an 8-2 win over New Ulm Tuesday night in non-conference girl's hockey game at the New Ulm Civic Center.

Bergland got her hat trick in the five-goal Faribault first period when she scored three straight goals while Johnson scored two in the first period and added a power play score in the second period.

Madi Sellner and Aimee Abrahamson each scored an unassisted goal for the Eagles. Staff photo by Steve Muscatello
New Ulm's Morgan Griebel (3) fights for the puck against Taylor Salmonsens of Faribault Tuesday at the New Ulm Civic Center. For more photos of this event, go to <http://cu.nujournal.com>

For New Ulm and coach Angie Zeig, the poor start may have been do to some pregame distractions.

"We came out with Parent's Night more on our minds than this high-caliber team that we played," she said. "We have not played a team like this in a while so right away we were not in the right mindset to start the game off."

And Faribault made them pay the price as Johnson got the Falcons on the board when the Eagles turned over the puck right in front of their net and Johnson buried it by New Ulm goalie Shalyn Salonek just three minutes into the game.

After that, it was the Megan Bergland show as she scored the next three goals in a span of less than four minutes before Johnson got her second goal of the game when the Falcons were on the power play.

"They have quite a few girls on that team that can stickhandler really well," Zeig said. "They can hit a corner on the net and they were really able to capitalize tonight."

Zeig said that she talked to her team about being down 5-0 after one period.

"I told them that the first period was done," she said. "Our goal after that first period was to come out and play well in the final two periods and win those periods. We only lost that second period 2-1 and we tied them in the third period 1-1. You take away that first period and it is a 3-2 game."

The Eagles scored their first goal of the game at the 1:25 mark of the second period when Sellner beat Faribault goalie Hannah Seitz.

Sellner left the game in the third period after taking a slap shot off of her right ankle.

"Madi took that slap shot so we just have to wait and see," Zeig said. "There is the possibility of a break but we are not sure."

But the Falcons, who improved to 15-5-1 on the season, countered Sellner's goal with scores from Shelby Salmonsens and Johnson's third goal to take a comfortable 7-1 lead into the final period.



Staff photo by Steve Muscatello
New Ulm's Morgan Griebel (3) fights for the puck against Taylor Salmonsens of Faribault Tuesday at the New Ulm Civic Center. For more photos of this event, go to <http://cu.nujournal.com>

Abrahamson sliced the Falcon lead to 7-2 on an unassisted power play score before Faribault's Kallen Knott closed out the scoring at the 13:43 mark.

"We needed a game like this just to remind us how that faster type of play is like again," Zeig said. "We have had a couple of games lately where we have been up 7-0. Playing a team like this made us get back in that style of playing at that high level. We need games like this to prepare us for the playoffs."

Bergland hat trick propels Falcons 20

Posted: Wednesday, January 27, 2010

Faribault Daily News

Megan Bergland notched a hat trick and Mackenzie Knack tallied five assists as the Faribault girl's hockey team topped New Ulm 8-2 Tuesday night.

"It was a pretty good game. We had different girls getting a lot of points," said coach Gretchen Dahl.

The Falcons scored five times in the first period, including all three of Bergland's goals, en route to the victory.

Jackie Johnson also added a pair of goals and an assist.

Berle leads New Ulm (16)

POSTED: January 13, 2010 New Ulm Journal

LITCHFIELD - The New Ulm girls hockey team had a big win over Litchfield on Tuesday night winning 6-3.

The Eagles were led by Kaylen Berle, who got a total of four goals and two assists, participating in every goal New Ulm scored against Litchfield.

Kali Denn scored one goal got two assists. Aimee Abrahamson added one goal and Chelsie Salonek picked up two assists for the night.

New Ulm goalie Shalyn Salonek had 23 saves during the game.

New Ulm ices Fairmont Area (15a)

Jason Wilcox – Fairmont Sentinel Sports Writer

POSTED: January 6, 2010

Note Box Score from Fairmont Sentinel Below

New Ulm 6, Fairmont Area 0 - Madi Sellner scored two goals and tallied two assists to lead the Eagles to a 6-0 South Central Conference win over the Cardinals on Tuesday night in New Ulm.

Morgan Zollner had two assists and a goal, while Lexie Weiss added a goal and an assist. Jaya Dhami and Kaylen Berle had the other goals, while Kali Denn added an assist.

Fairmont Area goalie Jess Wiederhoeft reached a career milestone Tuesday as she pocketed her 3,000th career save early in the second period. She finished with 35 saves, needing 17 to get to 3,000.

Kacie Covington had seven saves for the Eagles.

Staff photo by Steve Muscatello

New Ulm's Morgan Zollner (10) looks for her own rebound in front of Fairmont goalie Jess Wiederhoeft during the first period of the Eagles' win Tuesday at the New Ulm Civic Center. Zollner scored on the play. For more photos of this event, go to <http://cu.nujournal.com>

HOCKEY BOX SCORE

New Ulm 4 2 0 - 6

Fairmont0 0 0 - 0

SCORING PLAYS

1st Period

NU - Kaylen Berle (Kali Denn), 3:21.

NU - Madi Sellner (Morgan Zollner, Lexie Weiss), 6:35.

NU - Sellner (unassisted), 7:15.

NU - Zollner (unassisted), 10:04.

2nd Period

NU - Jaya Dhami (Sellner, Zollner), 2:04.

NU - Weiss (Sellner), 8:25.

3rd Period

No scoring.

Shots on goal: Fairmont Area 0-1-6-7; New Ulm 19-13-9-41.

Saves: Jess Wiederhoeft (FA) 15-11-9-35. Kacie Covington (NU) 0-1-6-7.

Penalties: Fairmont Area 3 for 6 minutes; New Ulm 2 for 4 minutes.

Eagle girls dominate Fairmont (15)

By Jim Bastian, Journal Sports Writer

POSTED: January 6, 2010

Note box score in previous article from Fairmont Sentinel

\NEW ULM - How dominant was the New Ulm Eagle girl's hockey team Tuesday night in their South Central Conference match-up with Fairmont?

At the 9:51 mark of the second period., Fairmont recorded its first shot on New Ulm goalie Kacie Covington.

The Eagles allowed just six more shots on Covington as they recorded 41 shots on Cardinal goalie Jess Wiederhoedft as New Ulm skated to an easy 6-0 win over Fairmont.



Madi Sellner scored two goals for New Ulm (3-0, 5-10) with Kaylen Berle, Morgan Zollner, Jaya Dhami and Lexi Weiss each scoring goals.

Sellner and Zollner each added two assists. Weiss and Kali Denn each had a helper.

"We knew that they [Fairmont] were down," Eagle coach Angie Zeig said. "And this would be a good chance for us to utilize more players on our bench. And we went out and did a great job. I think that tonight was the best passing that I have seen out of our team all year - we had some good teamwork."

That teamwork resulted in a 19-0 shot advantage in the first period and a 4-0 lead.

Berle got the New Ulm goals started when she put a backhand by Wiederhoeft at the 3:21 mark before Sellner scored the first of her two goals when she beat Wiederhoeft on a slap shot at the 5:35 mark.

Sellner added her second goal of the game less than two minutes later on a scramble in front of the net for a 3-0 lead.

Zollner made it 4-0 at the 10:04 mark when she put her own rebound by Wiederhoeft.

It was a period that saw Fairmont rarely get out of its own end of the ice.

New Ulm made it a 5-0 contest just over two minutes into the second period when Dhami rifled a slap shot from just inside the blue line,

"We came out and controlled the puck right from the first face-off," Zeig said. "The girls did a good job playing both sides of the puck tonight. They controlled the puck in both zones - they made good quality passes. We had a lot of combinations come through tonight."

Weiss continued the goal onslaught when she made it 6-0 at the 8:32 mark.

Zeig said that she had talked with the team prior to the game about where they were in their season compared to last year.

"Our team goal is to return to the state tournament this year and being able to put the puck in the net was definitely one of our goal," she said. "But it was nice to see five different players do it was pretty promising going into our next games.

"Our record does not look all that good now (5-10) but if you look at the non-conference competition that we have played - we have had promising games but we have not come out on top. This is a step forward."

SEASON SUMMARY CONTINUES

ON FOLLOWING PAGES

New Ulm girls take fourth place in Rochester (12-13-14)

POSTED: December 31, 2009 New Ulm Journal

ROCHESTER - The New Ulm girls hockey team took fourth place at the Dodge County Sertoma Shootout.

The Eagles opened the tournament with a 5-2 win over Winona on Monday. Kali Denn had two goals and an assist. CeCe Huffman had a goal and an assist and Kaylen Berle scored two goals. Chelsie Salonek had an assist. Shalyn Salonek stopped 21 of 23 shots in goal.

The Eagles lost the second game 4-1 to Central Wisconsin Storm. Berle had the goal with Huffman and Madi Sellner getting the assists. Kacie Covington stopped 36 of 40 shots in goal.

In the final game, St. Paul United defeated New Ulm 7-1. Chelsie Salonek had the goal with Berle and Denn getting the assists. Shalyn Salonek stopped 33 of 40 shots.

Eagle Girl's hockey loses 4-3 (11)

REPRODUCED from New Ulm Journal, Dec. 23, 2009

LUVERNE – Luverne/Adrian defeated New Ulm Eagles Co-Op in prep girls hockey action Tuesday.

New Ulm did not call in statistics from the game.

Eagle girls silence Bulldogs (10)

By Jeremy Behnke, Journal Sports Editor

POSTED: December 16, 2009

NEW ULM - The New Ulm girls hockey team knew that it was going to have a battle with St. Peter/LeSueur-Henderson/Montgomery-Lonsdale in what was going to be a key South Central Conference match-up.

But the Eagles attacked first, scoring the first two goals of the game and ended up with a 6-2 SCC win at the New Ulm Civic Center.

New Ulm's Morgan Zollner had a hat trick, scoring a goal in each period as the Eagles improved to 3-7 overall

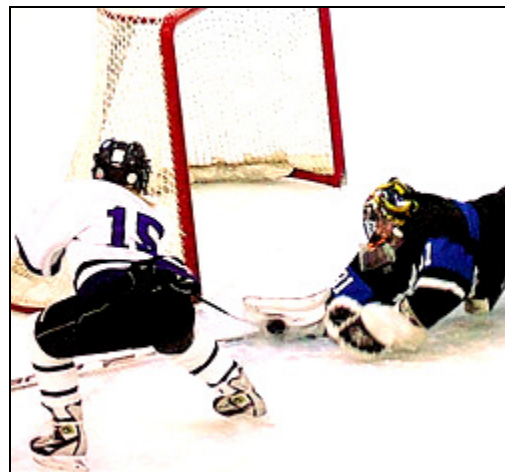
"It was a conference game so it was pretty important," Zollner said. "We were trying a new breakout so we were trying to get that in motion to try and keep our heads up and pass more."

The Eagles had no problems passing the puck and firing shots on goal early on, dominating the shots on goal in the first part of the first period. That led to goals by Madi Sellner off an assist from Lexie Weiss and another goal from Zollner off the assist from Weiss and Sellner.

"It was huge, because once you get the momentum, then the other team just starts breaking down," Zollner said of the two-goal lead.

The Eagles led 2-0 after the first period, but the Bulldogs' Erin Seaver put her team on the board when she fired a slapshot from just inside the blue line that got past New Ulm goalie Shalyn Salonek to make it 2-1.

But the Eagles responded with two more goals to take a 4-1 lead into the third period. Zollner scored her second goal of the game unassisted with 11:15 left in the period, and Kali Denn scored less than two minutes later off assists from Jaya Dhimi and Kaylen Berle.



Staff photo by Steve Muscatello
St. Peter/LeSueur-Henderson/Montgomery-Lonsdale goalie Kirsten Shaughnessy makes a diving save on a shot from New Ulm's Chelsie Salonek (15) during the first period Tuesday at the New Ulm Civic Center. For more photos of this event, go to <http://cu.nujournal.com>

In the third period, Brittany Pell scored the second Bulldogs goal, but that was it for the the rest of the night. New Ulm scored twice more, one from Zollner and another from Denn, to put the game out of reach.

It was the third straight win for the Eagles, who got off to a slow start due to some inexperience with some of the players skating together for the first time.

"We're learning to play together a lot better and we're getting a lot more comfortable," Zollner said.

The Eagles look to win their fourth straight game when they travel to Luverne Tuesday.

New Ulm girls defeat Waseca in SCC (9)

POSTED: December 11, 2009 New Ulm Journal

WASECA - New Ulm defeated Waseca 4-2 in South Central Conference girls hockey action Thursday.

Kali Denn scored New Ulm's first goal and Morgan Zollner scored the second goal on an assist from Lexi Weiss and Jaya Dhmi. Kaylen Berle scored the next two goals for the Eagles.

Kacie Covington had 10 saves as the Eagles outshot Waseca 44-12.

Jays fall to Eagles (9a)

Posted: Thursday, December 10, 2009 Waseca County News



Sopkowiak

By ZACH HACKER
Sports Editor

WASECA — The Waseca girls hockey team was looking to make a statement Thursday in its match-up with arch rival New Ulm.

Unfortunately for the Jays, they'll have to wait until they're next contest with the Eagles on Jan. 28 after taking a 4-2 South Central Conference loss Thursday.

The Bluejays got on the board early. Taryn Juberien took the assist from Sierra Copp to light the lamp 3:47 into the first period to put Waseca up 1-0.

But the Eagles would add three unanswered goals in the first to turn the deficit into a 3-1 advantage.

Waseca inched closer less than two minutes into the second frame. Dana Sopkowiak scored the Jays' second goal of the night unassisted and shorthanded to cut the New Ulm lead to 3-2.

That would be as close as the Bluejays would get, however. The Eagles added one more in the third to close it out at 4-2.

New Ulm out-shot Waseca 38-10, with the Jays getting just five shots on goal in the final two periods. Laura Weichert got in front of 34-of-38 shots fired her way.

Eagles pick up first win of season (8)

POSTED: December 8, 2009 New Ulm Journal

WINDOM - New Ulm defeated Windom 8-2 in nonconference girls hockey action Monday.

The Eagles, who had 98 shots on goal, were led by Kaylen Berle and Lexi Weiss, who had two goals each. Morgan Zollner, A.J. Abrahamson, Kali Denn and Morgan Griebel had the other New Ulm goals.

Madi Sellner, Zollner, Denn, Berle, Chelsey Salonek, and Miranda Sandberg had assists for the Eagles.

Shalyn Salonek had eight saves for New Ulm. The Eagles (1-7) are at Waseca Thursday

Eagles fall to Hutch (7)

POSTED: December 6, 2009

HUTCHINSON - New Ulm fell to Hutchinson 6-5 in girls' hockey action Saturday.

Kaylen Berle had an goal two assists. Jaya Dhami had a goal and an assist. Kali Denn had two goals and Madi Sellner had a goal.

Morgan Zollner, CeCe Huffman, Chelsie Salonek and Lexi Weiss each had assists.

Kacie Covington had 28 saves.

Orono blanks New Ulm girls (6)

By Jim Bastian, Journal Sports Writer

POSTED: December 4, 2009

NEW ULM - Sometimes in hockey, you can do everything but put the puck in the net.

New Ulm goalie Shalyn Salonek stopped 27 of 28 Orono shots Thursday night at the New Ulm Civic Center.

But the one shot that got by her proved to be the game-winner.

Orono's Shea Noerenberg put a rebound by Shalonek at the 5:48 mark of the second period and Spartan goalie Casey Hartfiel made it hold up as the 20th-ranked team in Class "A" snuck by the Eagles 1-0 in girl's hockey.

Despite the sixth straight loss by the Eagles, coach Angie Zeig said that she was happy with the effort of her team.

"I was very impressed by the way that the team played tonight," she said. "They played three full, strong periods - I could not have asked for anything better."

Zeig was also impressed by the play of Salonek in goal. The junior net minder recorded 27 saves, many of them coming off of quality scoring chances by the Spartans.

"She had her head in the game," Zeig said. "She was in the right spot tonight and she had her teammates backing her up. She let some rebounds get out but her teammates were there to clear them out."

While Salonek was exceptional in goal, the Eagle offense was not as impressive.

New Ulm recorded just 11 shots on goal in the game and now has scored only seven goals in six games.

Zeig said that part of the problem with the offense is that the Eagles do not have their lines set up yet.



Staff photo by Steve Muscatello

New Ulm's Morgan Zollner gets past a pair of Orono defenders during the second period Thursday at the New Ulm Civic Center. Zollner was tripped on the play resulting in an Eagles' power play. For more photos of this event, go to <http://cu.nujournal.com>

"But we saw some things starting to click tonight," she said. "We saw some player combinations that are working well together and I think that it will just be those girls getting used to each other and knowing where they are going to be on the ice."

Zeig said one of the line combinations that she used was having Kaylen Berle and Kali Denn together.

"Then we rotated a wing there with Chelsie Salonek and Aimee Abrahamson. That line was clicking together."

She also paired Madi Sellner, Lexi Weiss and Morgan Zollner on another line.

"Morgan is a real scrapper -she will go in the corner for the puck and Lexi seems to be in the right place at the right time and Madi is a pure hard worker."

Zeig felt that her team had decent shots.

"Tonight we had better shots than we have had in our previous games. The goals will come - we just need to be patient."

She did feel that some of the girls are getting frustrated by the lack of scoring so far this season despite having played a tough non-conference schedule to open the season.

"Some are [frustrated]," she said. "To me I do not see it as a big frustration because we were not necessarily scoring but we were playing such good defense that we only let them score one goal. Teams that we played before have been scoring three or more goals on us. So to come out tonight and let in only one goal against a team like Orono - there is no way I can be disappointed about that.

"It is frustrating being 0-6 but I am seeing a lot of promising things out there," Zeig said. "The record does not mean as much to me right now. We know that we can have a start like this but the true test will come in January and February and into playoffs. That is when it really matters."

Tigers girls' hockey blasts New Ulm 8-3 (5A)

Published by Albert Lea Tribune, Wednesday, December 2, 2009

The third period was a different story for the Albert Lea girls' hockey team Tuesday night when it faced New Ulm in New Ulm.

The Tigers (2-2) scored three times in the final period to break open the game and rebound after a lackluster third period against Faribault last week.

Albert Lea senior Lauren Klick scored her only goal of the game 8 seconds into the third and she assisted on four other goals as the Tigers pounded the Eagles 8-3.

New Ulm (0-5) got on the board first at 13:08 in the first period when Aimee Abrahamson scored, but it didn't take long for Albert Lea to respond.

Sophia Jepson scored the first of her two goals at the 15:51 mark and netted her second goal at 7:16 of the second period.

Lauren Draayer followed with two goals and Madi Passingham scored three times in the rout.

It was a 5-3 game heading into the third but Klick's goal 8 seconds into the period iced the game.

Albert Lea 1 - 4 - 3 — 8

New Ulm ..1 - 2 - 0 — 3



Albert Lea goaltender Sydney Conely makes a stop Tuesday against New Ulm. The Tigers won 8-3 in New Ulm.

Photo by Sean Passingham for the Tribune

First Period—1, New Ulm, Aimee Abrahamson (Lexi Fischer, Madi Sellner), 13:08. 2, Albert Lea, Sophia Jepson (Lauren Klick), 15:51.

Second Period—3, Albert Lea, Jepson (Sam Stanley), 7:16. 4, Albert Lea, Lauren Draayer (Mariah Leach), 9:31 (pp.). 5, Albert Lea, Draayer (Klick), 10:27. 6, Albert Lea, Madi Passingham (Draayer, Klick), 13:24. 7, New Ulm, Kaylen Berle (Lexie Weiss, Sellner), 14:47. 8, New Ulm, Morgan Zollner (Kali Denn), 16:01 (pp.). Third Period—9, Albert Lea, Klick (Passingham), :08. 10, Albert Lea, Passingham (Stanley), 3:09 (pp.). 11, Albert Lea, Passingham (Klick), 13:09 (sh.).

Girls hockey falls to Albert Lea (5)

By Jeremy Behnke, Journal Sports Editor

POSTED: December 2, 2009

NEW ULM - For the first period, the New Ulm girls played even with Albert Lea, scoring the first goal of the game and skating to a 1-1 tie after the first 17 minutes of the game.

But the Tigers scored four times in the second period to break the game wide open and defeated the Eagles 8-3 at the New Ulm Civic Center.

The loss dropped the Eagles' record to 0-5 on the season.

"We came out with more intensity than we did last Tuesday against Marshall," New Ulm coach Angie Zeig said. "We knew they were a strong skating team. The main thing that we worked on is when our defense is breaking the puck out of the zone, we have to have confidence with it and don't overplay it."

New Ulm's Aimee Abrahamson scored the first goal of the game at the 13:08 mark on an assist from Lexi Fischer and Madi Sellner.

Albert Lea appeared to tie the game after the Tigers put a loose puck into the net at about the 16-minute mark. But the goal was waved off after the Tigers had a player in the crease.

At the 15:51 mark, Albert Lea's Sophia Jepson evened things up when she scored on an assist from Lauren Klick.

In the second period, the Tigers went up when Jepson again scored, this time on an assist from Sam Stanley. Lauren Draayer scored a power play goal and added another on an assist from Klick to put the Tigers up 4-1, and at the 13:24 mark the Tigers led 5-1 on Madi Passingham's first goal of the game.

The Eagles got goals from Kaylen Berle and Morgan Zollner just before the period ended to make it 5-3.

"It seems like we turn it on and off," Zeig said. "We go hard for two minutes, and then we slack off for four minutes. We have inconsistencies of lines yet because people gotta earn their spots yet."

The Tigers added three more goals in the third period. Klick scored at the :08 mark on an assist from Passingham on the power play. The Tigers scored another power play goal when Passingham scored, this time on an assist from Stanley to go up 7-3.

Albert Lea added one more goal on Passingham's third goal of the night off an assist from Klick.



Marshall tops New Ulm (4)

By Jim Bastian, Journal Sports Writer

POSTED: November 25, 2009

NEW ULM - For two periods, the New Ulm Eagle girl's hockey team failed to get a puck by Marshall net minder Paige Moravetz.

But in the third period, the Eagles were able to push two shots by the seventh-grade goalie.

Unfortunately, by that time Marshall had scored three times as the Tigers kept New Ulm winless on the season with a 3-2 win.

Jenny Schwieger, Rachel Peters and Bridgette Louwagie provided the offense for the Tigers with goals.

Morgan Zollner and Lexi Fischer netted the third period scores for New Ulm, now 0-4 on the season.

Staff photo by Steve Muscatello

Marshall goalie Paige Moravetz makes a kick save on a shot from New Ulm's Madi Sellner (8) during the first period Tuesday at the New Ulm Civic Center. For more photos of this event, go to <http://cu.nujournal.com>

"We finally woke up in that third period," Eagles coach Angie Zeig said. "We figured out where we were going (on the ice) and what we needed to do. I thought that our special teams looked good for us tonight (killing all five Marshall power plays). We took a lot of unnecessary penalties - we did not move our feet (on the penalties)."

Marshall took a 1-0 lead in the first period on Schwieger's goal at the 14:28 mark as she beat Eagle net minder Kaci Covington.

Louwagie and Peters scored goals just 29 seconds apart in the second period for a 3-0 Tiger lead going into the final period.

While the Eagle offense was scoreless in the first two periods, part of that was due to the fact that New Ulm was busy killing five Marshall power plays which took the Eagles out of their offense.

"We have hardly had any offense this year on even strength," Zeig said. "We have to figure out a better way to get our offense going when we are five-on-five. For some reason we just cannot get it going this year."

And thus far this year, New Ulm has failed to lead in any of their games.

"We have fell behind in every game." Zeig said. "We have never been up on the scoreboard. We need to work on that. I also think that we underestimated Marshall. We could not get to her until the third period."

Box score reprinted from Marshall Independent.

Marshall1 - 2 - 0 --- 3

New Ulm0 - 0 - 2 ---2

Marshall Scoring

14:24-1. Mar, Jenny Schwieger (Bridgette Louwagie)

Second Period

15:20-2. Mar, Louwagie (unassisted)

15:48-3. Rachel Peters (Lizzie Archbold)

Shots on Goal-Marshall 22, New Ulm 30



For Marshall Independent story click this link:

<http://www.marshallindependent.com/page/content.detail/id/513704.html?nav=5024>.

Eagles drop home opener (3)

By Jim Bastian — Journal Sports Writer

POSTED: November 21, 2009

NEW ULM - New Ulm girl's hockey coach Angie Zeig wanted a tough nonconference schedule to start the season.

Friday night was no exception when her Eagles hosted the eighth ranked team in Class 1A in Mound-Westonka.

Taylor Kuehl scored four goals and Kia Johnson added a hat-trick as the White Hawks out-shot New Ulm 26-8 and rolled to the 8-0 victory.

New Ulm goalie Kacie Covington stopped 26 of 34 WhiteHawk shots.

"We knew coming in that this was going to be a tough game," Zeig said. "But tonight was not like our first two games - we played a lot better in those first two games. We did not seem to be skating quite as well as we did in those first two games."

Mound-Westonka took control of the game right away with three goals in the first period as the Eagles could muster little offense to match the White Hawks.

Kuehl, Nina Chase and Kia Johnson scored goals in that first period.

"They have a lot of good players," Zeig said. "Taylor Kuehl is one of the top scorers in the state. She can stickhandle and moves well. But their team does not just revolve around her. They have players that can

Two more goals each from Johnson and Kuehl in the second period lifted the White Hawks into a 7-0 lead going into the final period.

"It is tough to try and come back when you are down like that," Zeig said. "We told the kids after the second period that we probably were not going to win the game but that in the third period was where we could try different things.

"And I saw some things in that third period that were pretty promising for us. We got a couple of slap shots out of our defensemen that we normally don't get and our forwards were trying some moves. They were trying some things that they normally don't do."

Mound-Westonka added a third-period goal against a New Ulm team that saw the roster dotted by four eighth graders, four freshmen and four sophomores.

"In this game, we only played one senior so we have a lot of younger girls. Once the younger players get used to t Mound-Westonka also had more depth that the Eagles.

"They were able to play a third and a fourth line at times, that tired our girls out," Zeig said.

he pace of varsity hockey they will be OK. They seem to understand the game but they need to reach that pace."

NU Girls fall to St. Paul United (2)

POSTED: November 18, 2009

ST. PAUL - The New Ulm girls hockey team fell to St. Paul United 3-2 Tuesday.

Morgan Zollner had a goal with Madi Sellner and Kali Denn getting the assist. Sellner also scored an unassisted goal.

Kacie Covington was in goal and she had 29 saves.

New Ulm falls in opener (1)

November 13, 2009

MANKATO — Mankato West defeated New Ulm 6-0 in nonconference girls hockey action Thursday to open the season for both teams.

Kacie Covington had 40 saves in goal for the Eagles.

Back For More

POSTED: November 12, 2009

.By Jim Bastian
Journal Sports Writer

NEW ULM - Last year was a banner season for the New Ulm Eagle girl's hockey team as they went 20-6-2 and earned their first trip to the Minnesota State Girl's Hockey Tournament where they went 1-2 and took sixth place.

This year's edition will hope to repeat last year's efforts.

"We lost some good players from last year's team," Eagles' coach Angie Zeig said. "But we have some good players back from that team and I think that we can make that repeat trip to the state tournament. That is the goal that this team has already set."

One of the keys to how far New Ulm will go is the goaltending, where Kacie Covington is back.

She said that the experience that the team and herself gained last year in the state tournament will help a lot this season.

"It showed us how much harder we have to work in practice and games," she said

Covington said that she worked on her game in the off-season by going to some hockey camps and playing soccer this fall to keep her in shape.

"We have a lot of good players back from our second line this year," Zeig said. "We have two goalies in Kacie and Shalon Salonek. We also have back some good forwards - we have some good girls who I think can help us."



Staff photo by Mary Roufs
New Ulm High School Goalie Kacie Covington is back for the Eagles after a state tournament appearance last year. For more photos of this event, go to <http://cu.nujournal.com>

And the experience that was gained by both goalies last year in the state tournament will pay dividends this year.

"They saw what kind of shots and what kinds of skaters they are up against," Zeig said.

And the state experience also rubbed off on Zeig.

"I think that I kind of changed around how much I wanted to push and what things we need to focus on to compete with the teams of that caliber."

Zeig feels that this year's team will have a balance between the first two lines and the Eagles may have enough depth to play a third line in the season.

"Kaylen Berle is the one person that we will count on," Zeig said. "But depending on who her line mates are we can have those balanced lines and not the overloaded first line like we did last year. I think that we have the ability to have any one of the girls be a scorer in any given game."

The Eagles will start the season with three tough non-conference games as they play Mankato West, Mound-West Tonka and St. Paul United.

"These kind of games prepare us for the playoffs. We could realistically be winless going into our [South Central] Conference schedule because of the caliber of the teams that we are playing."



Scrapbooking the 2009-2010 Season for the NEW ULM EAGLES CO-OP HOCKEY TEAM
